

Dictation

Part II: Tonal & Melodic

Chapter 2: Diatonic Steps and Tonic Triad in the Major Scale; Simple Meters, Undivided Beat

Dictation involves translating rhythm patterns, tonal patterns, melodies, and chord progressions heard aurally into staff notation. Echoing tonal patterns using the three-step process¹ builds the aural-oral vocabulary and translation skills.

Tonal Dictation: Diatonic Steps and Tonic Triad in Major Scale

Developing Aural-Oral Translation Skills

Practice singing and naming patterns (Sections 2.3 and 2.5) using the three-step aural-oral process with your instructor or student partner or individually using the MP3 files of the tonal patterns for Part II, Chapter 2 located on the companion website. Keep in mind that the third step (instructor sings pattern using a neutral syllable/student echo sings using correct tonal syllables) is aural-oral dictation. The next step would be to notate it on an iconic graph or a staff. *An iconic graph visually depicts whole and half steps, an element the staff does not show.*

Tonal Procedure (Iconic and Notation)

- First playing: Listen to the tonal pattern and write the first letter of each tonal syllable. If a particular pitch or two cannot be determined, draw a question mark and then continue to move forward focusing on the ensuing pitches.
- Second playing: address the missing pitch(es).
- Notate the tonal pattern on an iconic graph or transcribe the tonal syllables into notation by using note heads to indicate the pitches on the staff.

Suggested tonal shorthand symbols for Part II, Chapter 2 are illustrated below.

Iconic Tonal Dictation							
d					d		d
t						t	
l							
s	s			s			
f							
m		m					
r							
d			d				

Tonal Dictation and Notation	
Tonal Syllables	1 d m s d' t l s d'
Tonal Notation	
Tonal Syllables	2 m d s, l, t, d r d
Tonal Notation	

¹ The three-step process is outlined in An Introduction to the Musical Literacy Process in *Progressive Sight Singing*.

Additional Iconic Tonal Templates — Chapter 2, Part II

1.									
Iconic Tonal Dictation Major Scale									
d									
t									
l									
s									
f									
m									
r									
d									
4.									
Iconic Tonal Dictation Major Scale									
d									
t									
l									
s									
f									
m									
r									
d									
7.									
Iconic Tonal Dictation Major Scale									
d									
t									
l									
s									
f									
m									
r									
d									
2.									
Iconic Tonal Dictation Major Scale									
d									
t									
l									
s									
f									
m									
r									
d									
5.									
Iconic Tonal Dictation Major Scale									
d									
t									
l									
s									
f									
m									
r									
d									
8.									
Iconic Tonal Dictation Major Scale									
d									
t									
l									
s									
f									
m									
r									
d									
3.									
Iconic Tonal Dictation Major Scale									
d									
t									
l									
s									
f									
m									
r									
d									
6.									
Iconic Tonal Dictation Major Scale									
d									
t									
l									
s									
f									
m									
r									
d									
9.									
Iconic Tonal Dictation Major Scale									
d									
t									
l									
s									
f									
m									
r									
d									

Draw a box around *tonic chord tones*, a circle around *passing tones*, and a triangle around *upper* and *lower neighbor tones*.

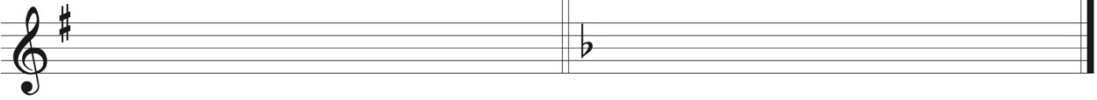
Tonal Templates — Chapter 2, Part II

Tonal Syllables

1.

2.

Tonal Notation

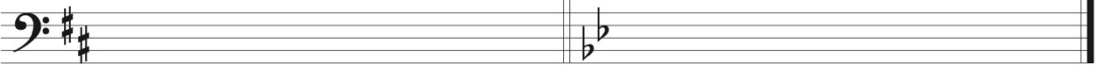


Tonal Syllables

3.

4.

Tonal Notation



Tonal Syllables

5.

6.

Tonal Notation



Tonal Syllables

7.

8.

Tonal Notation



Tonal Syllables

9.

10.

Tonal Notation

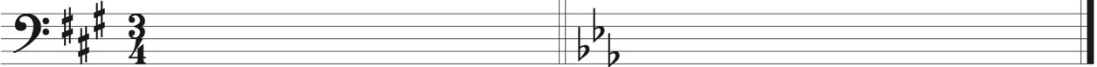


Tonal Syllables

11.

12.

Tonal Notation

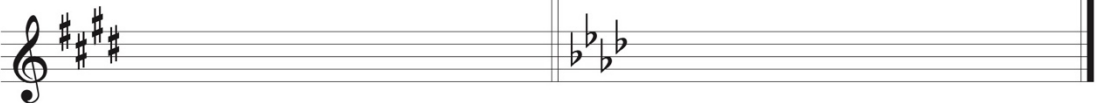


Tonal Syllables

13.

14.

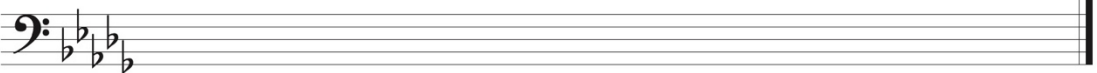
Tonal Notation



Tonal Syllables

15.

Tonal Notation




Melodic Templates — Chapter 2, Part II

The instructor will indicate the key signature.


Tonal Syllables 1. _____ 2. _____

Short Hand

Notation 


Tonal Syllables 3. _____ 4. _____

Short Hand

Notation 


Tonal Syllables 5. _____

Short Hand

Notation 


Tonal Syllables 6. _____

Short Hand

Notation 

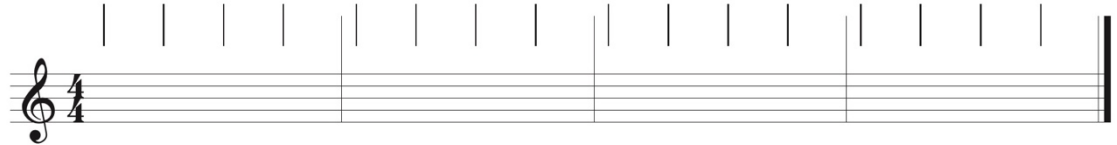
Tonal Syllables 7. _____

Short Hand

Notation 

Tonal Syllables 8. _____

Short Hand

Notation 

Tonal Syllables 9. _____

Short Hand

Notation 