

Find the the source for each <pc string> from the rows provided, identified as either row A, B, C, or D. Give the label for the <pc string>, assuming that the source row is a P-form. Specify the transformational mapping from the source row to the <pc string>.

<u>&lt;pc string&gt;</u>	<u>source row</u>	<u>label</u>	<u>mapping from source row</u>
Demo <1ET865297340>	C	I <sub>1</sub>	I <sub>3</sub> maps P <sub>2</sub> → I <sub>1</sub>

1. <7TE819034256>

2. <689E125T0437>

3. <2560943TE817>

4. <9E0T13462578>

5. <67908TE14235>

6. <652430918ET7>

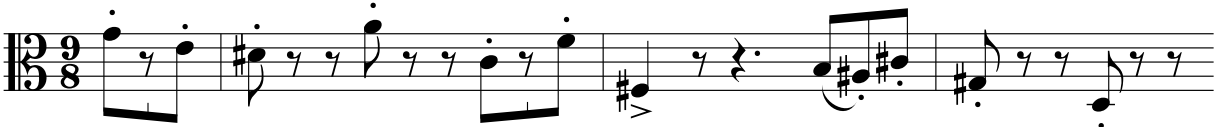
7. <5217T3498E60>

8. <06E9043T8125>

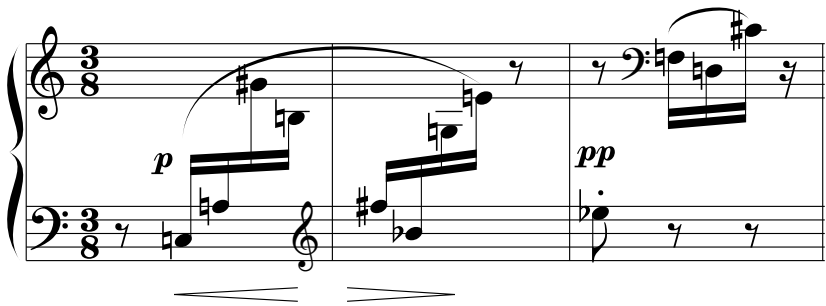
9. <T673185420E9>

10. <763541T290E8>

A. Arnold Schoenberg, String Quartet No. 3, 3rd movement



B. Anton Webern, Three Songs on Poems by Hildegard Jone, op. 25, no. 2



C. Alban Berg, Der Wein



D. Igor Stravinsky, Canticum Sacrum, "Surge, aquilo"

